

AERODROME CHART

AD ELEV 1175 FT

HOFKIRCHEN

HOFKIRCHEN AERODROME

H.B. HOFKIRCHEN

122,180

AUSTRIA

Phone +43 (0) 7225 7332

6,5 NM NNW STEYR



© Rogers Data www.rogersdata.at

Microsoft product screen shot reprinted with permission from Microsoft Corporation

RWY	STH	TORA	ASDA	TODA	LDA	ASI	ALS	THRE	THR PSN
08	21	530	-	-	480	-	-	-	-
26	21	530	-	-	500	-	-	-	-

LIGHTING NIL

ADDITIONAL INFO

OPS HOURS

Contact HOFKIRCHEN FLUGPLATZ at least 5KM from AD and maintain listening watch. Flights within Linz CTR outside depicted traffic circuit Hofkirchen only after clearance by LINZ TWR.

The approach shall be carried out via the respective long final or base leg.

Traffic circuits to the N for maintenance flights only.

Look out for GLD traffic. Avoid built-up areas near AD,

especially Hofkirchen, Niederneukirchen and Weichstetten.

PPR

Mon - Fri: 0700 LMT - sunset

Sat - Sun: 0900 LMT - sunset

Aerodrome admissible for:
engine-driven aircraft, glider,
helicopter

03 NOV 2022

N 48 08 21
E 014 20 12

HOFKIRCHEN (LOLH)

Changes: WIP N of RWY 08/26 taxiway added: 013 HRS

CHART FOR VFR FLIGHTS

AD ELEV 1175 FT

HOFKIRCHEN
H.B. HOFKIRCHEN
AUSTRIA

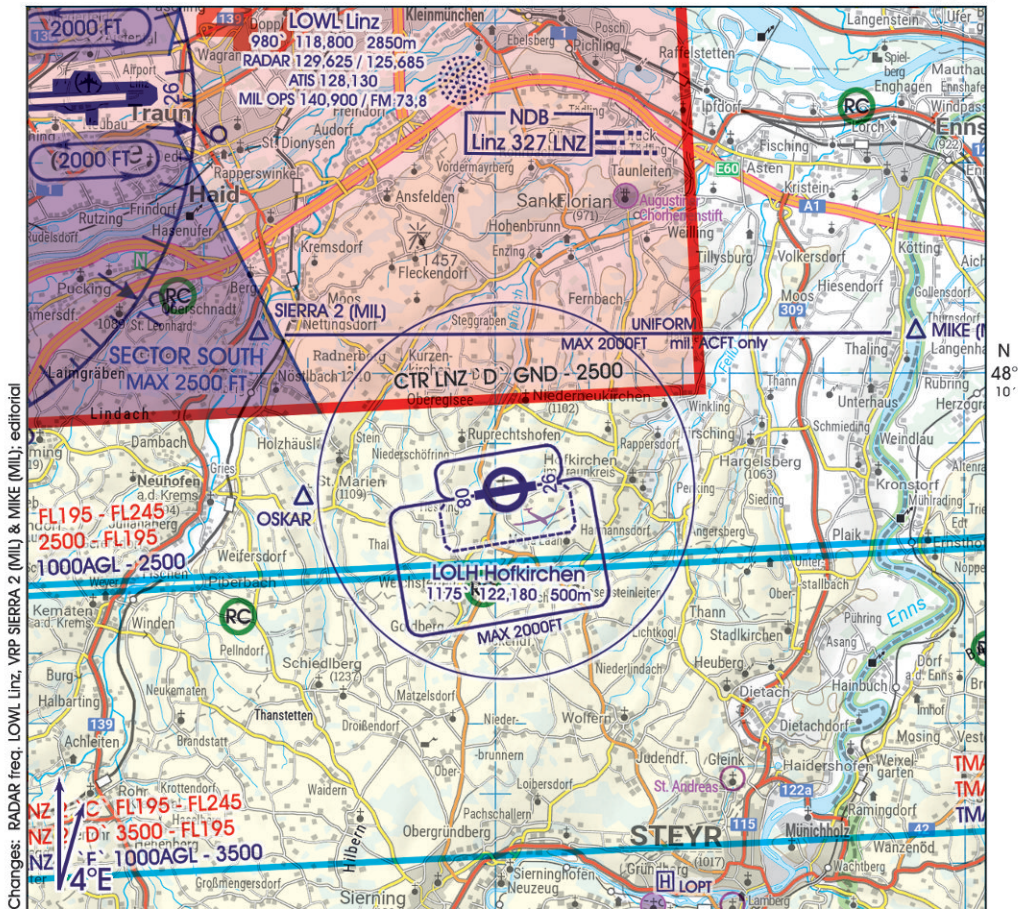
HOFKIRCHEN AERODROME
122,180

Phone +43 (0) 7225 7332

6,5 NM NNW STEYR

14° 20' E

14° 30' E



122,180 HOFKIRCHEN AERODROME
118,800 LINZ TOWER
128,130 LINZ ATIS
129,625 LINZ RADAR

24 MAR 2022

HOFKIRCHEN (LOLH)